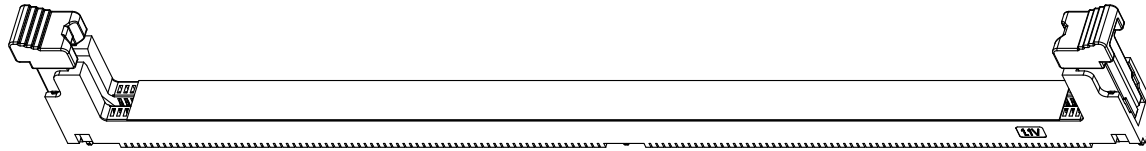
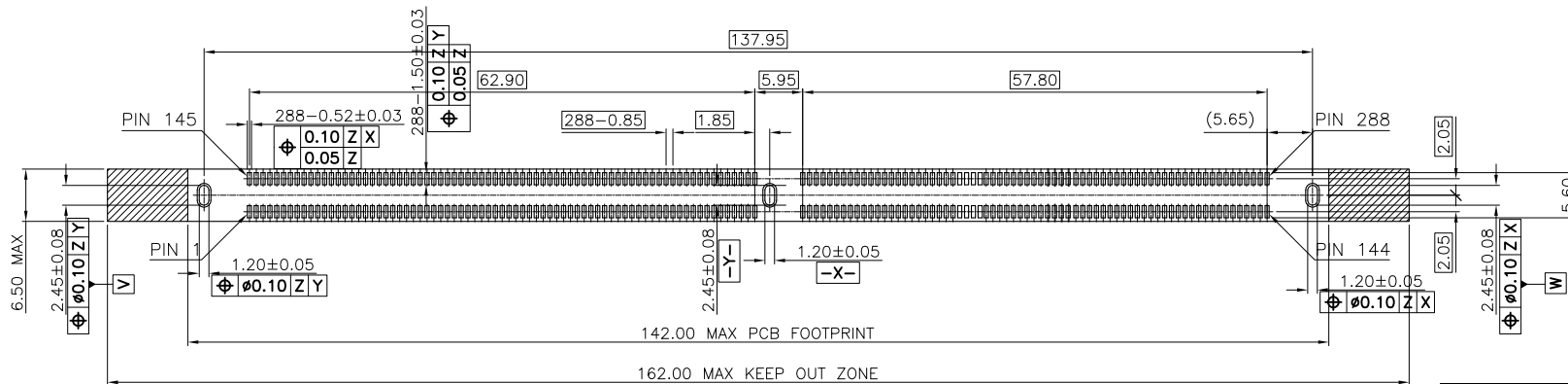
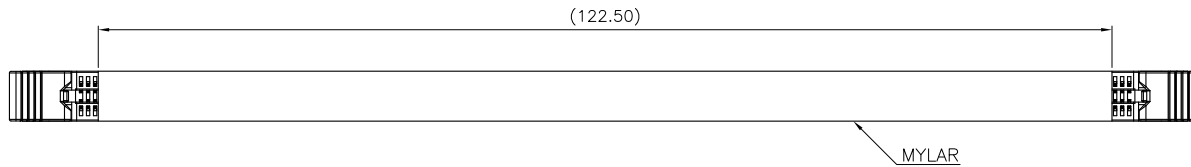


Section A-A

凱帛企業有限公司 KABO ENTERPRISE CO.,LTD.		
Name		
DDR5 記憶體插槽		
Drawing No.		
DDR5-1002-28801N		
APPD	CHK	DR
General Tolerances :	Unit :	Scale :
0.0 ±0.30 0' ±2'	mm	ROM
0.00 ±0.20 0' ±1'		
0.000 ±0.10 0.00' ±		



- NOTES:
1. MATERIAL:
    - 1.1 HOUSING&LATCH: PA9T+45% G.F GP2450 UL94V-0
    - 1.2 TERMINAL: SEE P/N T=0.20mm
    - 1.3 FORK LOCK: SUS304R-1/2H T=0.40mm
    - 1.4 MYLAR: BLACK T=0.10mm
  2. PLATING:
    - 2.1 TERMINAL: SEE P/N
    - 2.2 FORK LOCK: 50u" MATTE SN ON SOLDERING AREA, 50u"Min NICKEL UNDER PLATING OVERALL
  3. ELECTRICAL CHARACTERISTICS:
    - 3.1 LLCR: 40mΩ/PIN MAX  
CHANGE OF ALL PINS: 20mΩ
    - 3.2 INSULATION RESISTANCE: 1MΩ MIN.
  4. MECHANICAL CHARACTERISTICS:
    - 4.1 INSERTION FORCE: 106.8N MAX.
    - 4.2 WITHDRAWAL FORCE: 19.77 MIN.
  5. LIFE TEST: 25 CYCLES MIN

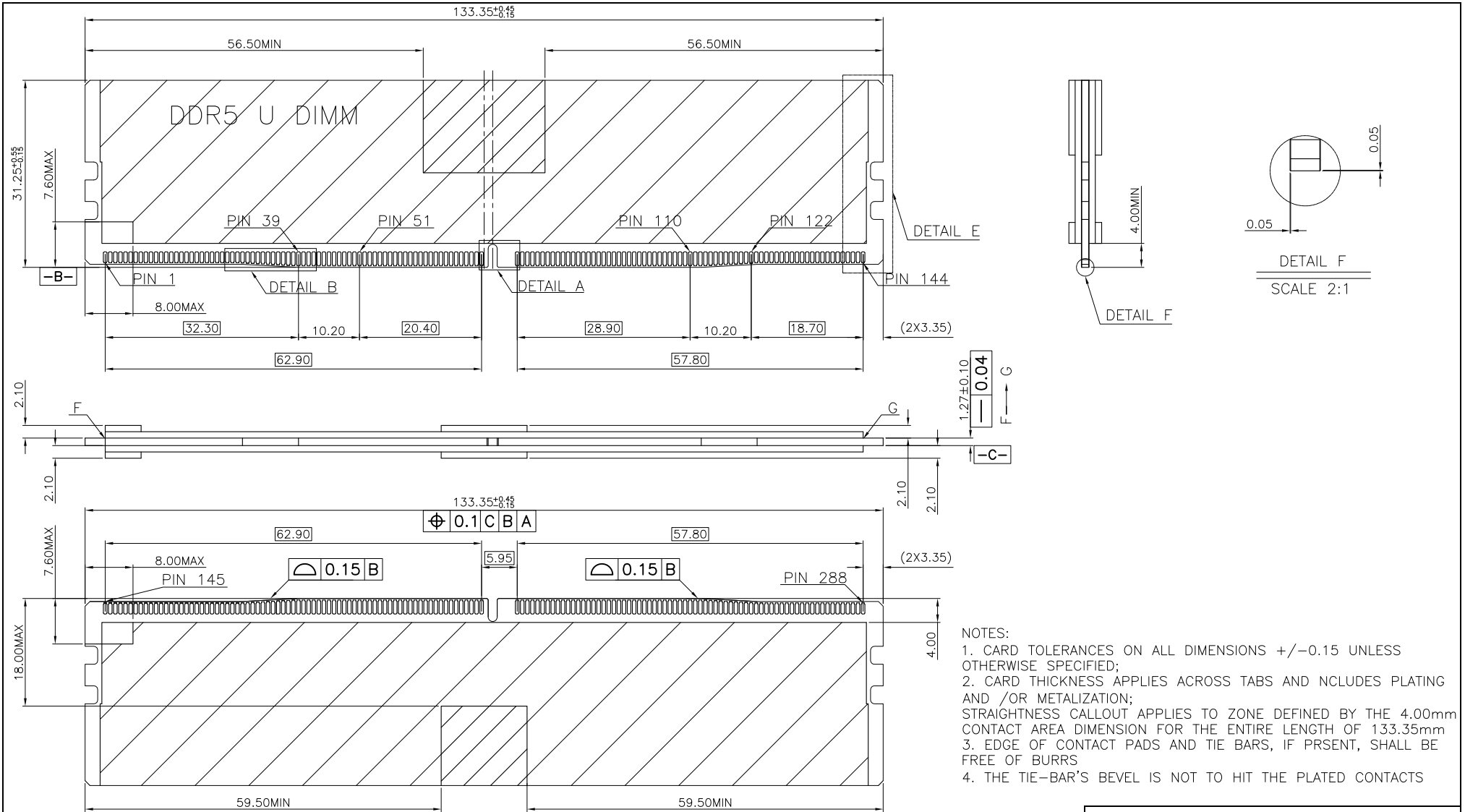


TOP VIEW

RECOMMENDED PCB LAYOUT

(TOLERANCE=±0.05mm)

凱昂企業有限公司 KABO ENTERPRISE CO.,LTD.			
Name			
DDR5 記憶體插槽			
Drawing No.			
DDR5-1002-28801N			
APPD	CHK	DR	
General Tolerances :		Unit :	
0.0	+0.30	0'	±2'
0.00	+0.20	.0'	±1'
0.000	+0.10	.00'	±
mm		Scale :	
		ROM	

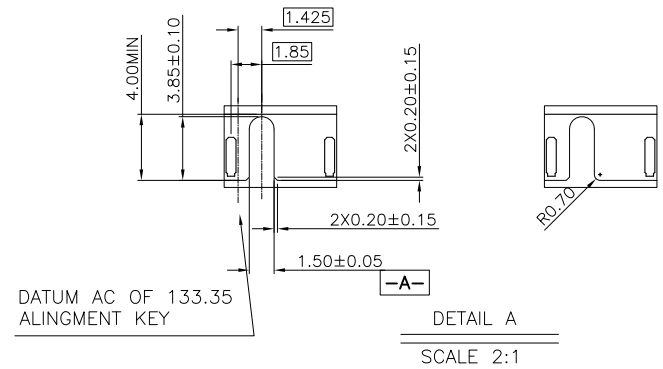
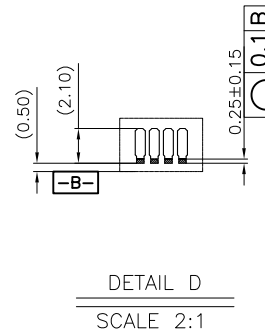
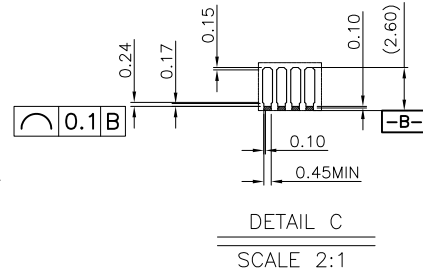
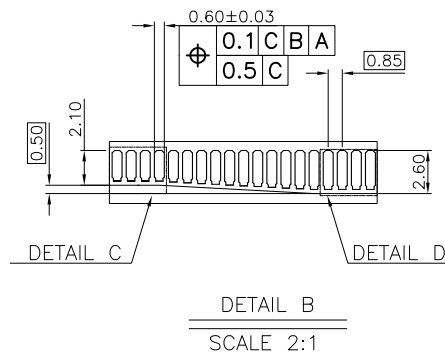
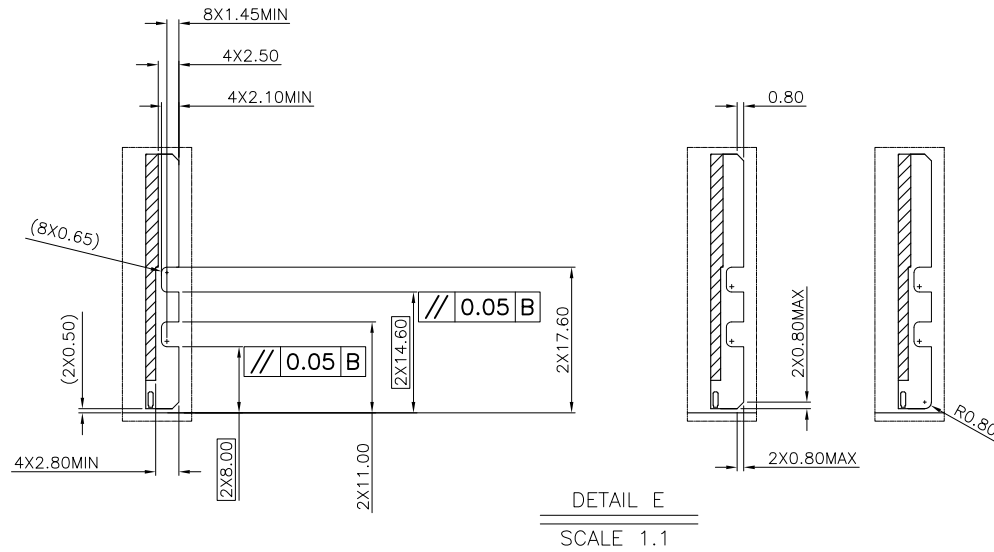


- NOTES:
- CARD TOLERANCES ON ALL DIMENSIONS  $\pm 0.15$  UNLESS OTHERWISE SPECIFIED;
  - CARD THICKNESS APPLIES ACROSS TABS AND INCLUDES PLATING AND /OR METALIZATION;
  - STRAIGHTNESS CALLOUT APPLIES TO ZONE DEFINED BY THE  $4.00$ mm CONTACT AREA DIMENSION FOR THE ENTIRE LENGTH OF  $133.35$ mm
  - EDGE OF CONTACT PADS AND TIE BARS, IF PRESENT, SHALL BE FREE OF BURRS
  - THE TIE-BAR'S BEVEL IS NOT TO HIT THE PLATED CONTACTS

凱昂企業有限公司 KABO ENTERPRISE CO.,LTD.		
Name		
DDR5 記憶體插槽		
Drawing No.		
DDR5-1002-28801N		
APPD	CHK	DR
General Tolerances :	Unit :	Scale :
0.0 +0.30 0' ±2'	mm	ROM
0.00 ±0.20 0' ±1'		
0.000 ±0.10 .00' ±		

NOTES:

1. CARD TOLERANCES ON ALL DIMENSIONS  $\pm 0.15$  UNLESS OTHERWISE SPECIFIED;
2. CARD THICKNESS APPLIES ACROSS TABS AND INCLUDES PLATING AND /OR METALIZATION;
3. STRAIGHTNESS CALLOUT APPLIES TO ZONE DEFINED BY THE 4.00mm CONTACT AREA DIMENSION FOR THE ENTIRE LENGTH OF 133.35mm
4. EDGE OF CONTACT PADS AND TIE BARS, IF PRESENT, SHALL BE FREE OF BURRS
5. THE TIE-BAR'S BEVEL IS NOT TO HIT THE PLATED CONTACTS



凱帛企業有限公司 KABO ENTERPRISE CO.,LTD.		
Name		
DDR5 記憶體插槽		
Drawing No.		
DDR5-1002-28801N		
APPD	CHK	DR
General Tolerances :		Unit :
0.0	+0.30	0'
0.00	+0.20	.0'
0.000	+0.10	.00'
		±2'
		±1'
		±
mm		Scale :
		ROM