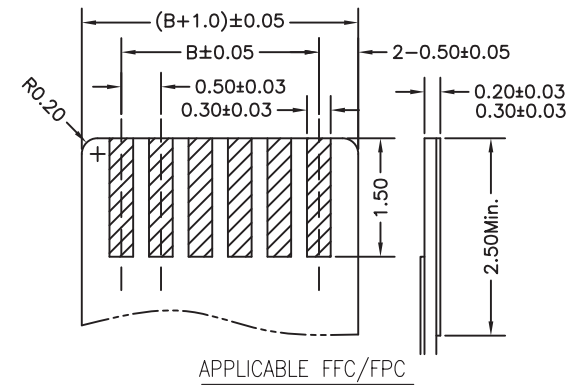
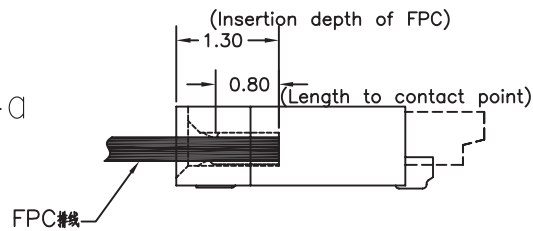
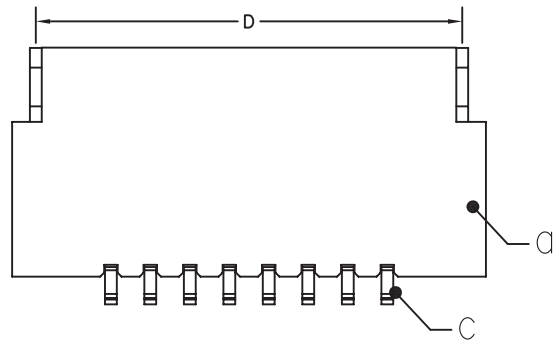
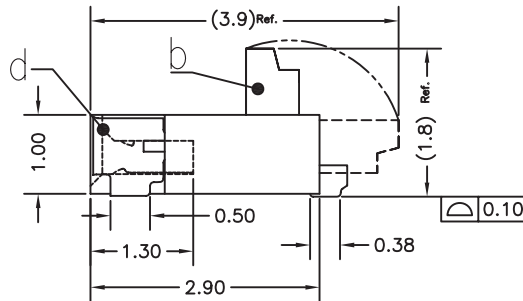
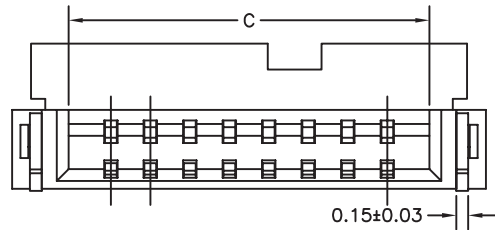


P.C.B. LAYOUT



APPLICABLE FFC/FPC



Current Rating : 0.5A AC/DC
 额定电流 : 0.5A AC/DC
 Voltage Rating : 50V AC/DC
 额定电压 : 50V AC/DC
 Withstand Voltage : 500V AC/minute
 耐电压 : 500V AC/minute
 Contact Resistance : 30mΩ(MAX.)
 接触电阻 : 30mΩ(MAX.)
 Insulation Resistance : 100MΩ(MIN.)
 绝缘电阻 : 100MΩ(MIN.)
 Temperature Range : -25°C~+85°C
 温度范围 : -25°C~+85°C

Dimensional Information:				
Part No.	Dimensions			
	A	B	C	D
4P	4.00	1.50	2.57	3.40
5P	4.50	2.00	3.07	3.90
6P	5.00	2.50	3.57	4.40
8P	6.00	3.50	4.57	5.40
10P	7.00	4.50	5.57	6.40
12P	8.00	5.50	6.57	7.40
14P	9.00	6.50	7.57	8.40
16P	10.00	7.50	8.57	9.40
18P	11.00	8.50	9.57	10.40
20P	12.00	9.50	10.57	11.40
22P	13.00	10.50	11.57	12.40
24P	14.00	11.50	12.57	13.40
26P	15.00	12.50	13.57	14.40
28P	16.00	13.50	14.57	15.40
30P	17.00	14.50	15.57	16.40
32P	18.00	15.50	16.57	17.40
34P	19.00	16.50	17.57	18.40
36P	20.00	17.50	18.57	19.40
38P	21.00	18.50	19.57	20.40
40P	22.00	19.50	20.57	21.40
42P	23.00	20.50	21.57	22.40
45P	24.50	22.00	23.07	23.90
50P	27.00	24.50	25.57	26.40

No.	Description	Material	Color/Finish
a	Housing	LCP,UL94V-0	Natural
b	Actuator	PA9T,UL94V-0	Black
c	Terminal	Phosphor Bronze	Gold Flash
d	LEG	Phosphor Bronze	Matte Tin Plating Over Ni

有開模PIN數如下
 4.5.6.8.10.12.14.16.18.20.22.24.26.28.30.32.34.36.38.40.42.45.50

凱帛企業有限公司
 KABOE ENTERPRISE CO.,LTD.

Name
 Pitch:0.5mm FPC SMT R/A TYPE H:1.0mm (後掀蓋)

Drawing No.
 FPC-0.5-1094-xx93N

APPD	CHK	DR
------	-----	----

General Tolerances :
 X.X ±0.20 X" ±2"
 X.XX ±0.15 X.X" ±1"
 X.XXX ±0.05 ▲ MAJOR DIM.

Unit : mm Scale : ROM