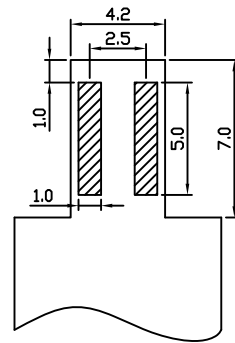
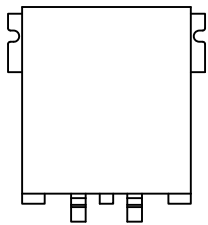
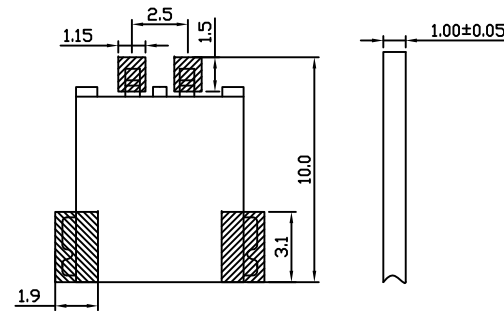
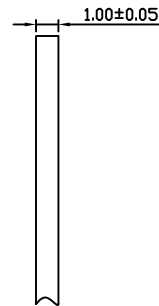


剖面圖A-A



Mating Aluminum plate detail



Board Layout

技術要求:

1. 間距: 2.5MM
2. 位數: 2P
3. 額定電壓: AC. DC. 250V  
額定電流: 2A AC. DC
- 耐壓: 1000V AC /分鐘
- 溫度範圍: -25° - + 120°
7. 絕緣電阻:  $\geq 1000M\Omega$
8. 接觸電阻:  $\leq 20m\Omega$
9. 材質: LCP
10. 適用基板厚度: SMD

凱帛企業有限公司

DESCRIPTION(內容)  
Pitch:2.5mm LED SMT TYPE

PART NO:  
(料號) LED-2.5-1001-0203N

DWG NO(圖號):

DRAWN(製圖)

CHECKED(確認):

APPROVAL(核准):

GENERAL TOLERANCE:  
(公差)

X.X ±0.25  
X.XX ±0.20  
X.XXX ±0.10

SCALE(比例):  
1:XX



REV:  
B

UNIT:  
mm

SIZE:  
A4

SHEET:  
1/1

REV

1

2

3

4

DESCRIPTION

DATE

2017.12.12