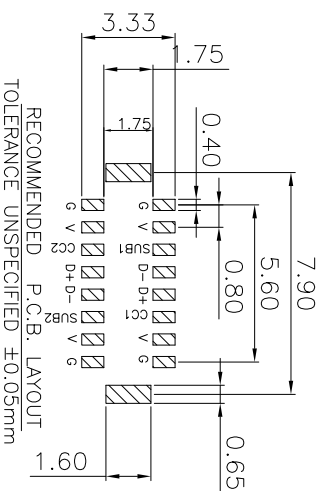
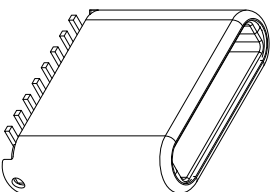
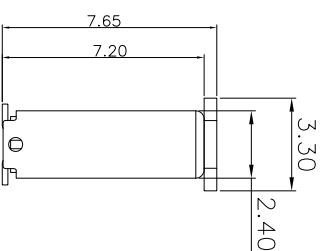
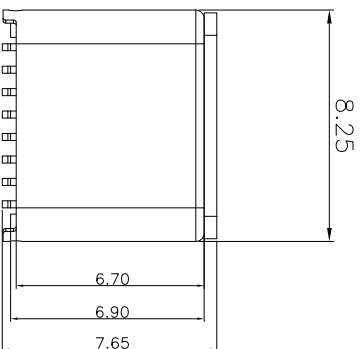
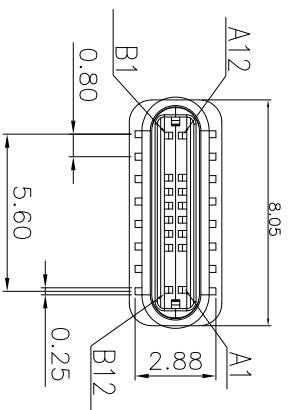


PIN	A1	A4	A5	A6	A7	A8	A9	A12
Signal Name	GND	Vbus	CC1	Dp1	Dn1	RFU1	Vbus	GND
PIN	B12	B9	B8	B7	B6	B5	B4	B1
Signal Name	GND	Vbus	CC1	Dp1	Dn1	RFU1	Vbus	GND



NOTES: 1.MATERIAL:

MOLDING: LCP UL94 V-0
CONTACT: COPPER ALLOY

GOLD PLATED ON CONTACT AREA, 100u"

Min TIN (LEAD FREE) ON SOLDER AREA,

SHELL: SUS304-H,T=0.30±0.03mm

50u" NICKEL PLATING OVER ALL.

SHLD:SUS304-H,T=0.12±0.03mm

2.MECHANICAL:

INSERTION: 5~20N.

EXTRACTION: 8~20N.

DURABILITY: 10000 CYCLES

3.ELECTRICAL:

CURRENT: 3A MIN FOR VBUS;

0.25A MIN FOR OTHER.

VOLTAGE: 5VAC MAX

WITHSTANDING VOLTAGE: 100V AC.

CONTACT RESISTANCE: 40mΩ MAX.

INSULATION RESISTANCE: 100MΩ MIN.

4.ENVIRONMENTAL

TEMPERATURE RANGE -55°C ~ +85°C

凱昂企業有限公司 KABOE ENTERPRISE CO.,LTD.		
Name USB C公 SMT V17 16PIN 直立全貼 短腳 LCP 黑膠 不銹鋼 電鍍G/F 3.1		
Drawing No. USB C-1021-1603N		
DR	-HK-	APPD
General Tolerances:		
0. ±0.38 0.00 ±0.15	Unit: mm	Scale: ROM
0.0 ±0.25 0.0° ±2°		