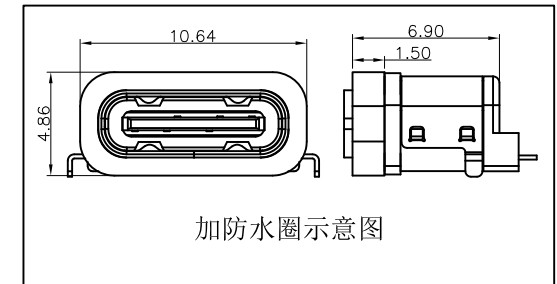
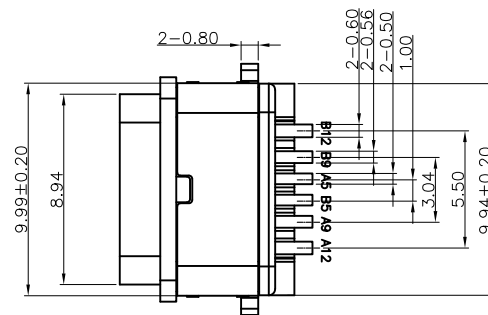
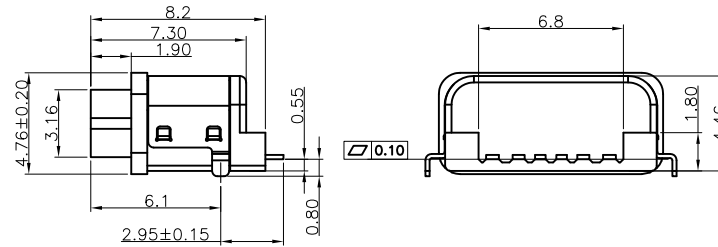
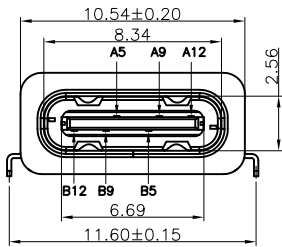


RECOMMENDED P.C.B. LAYOUT
TOLERANCE UNSPECIFIED ±0.05mm

NOTES:

SPECIFICATION:

1. CURRENT RATING: 3.0A MAX
2. VOLTAGE: 100 VAC
3. TEMPERATURE RANGE: -30 °C ~ 85 °C
4. CONTACT RESISTANCE: 40 MILLIONHM MAX
5. INSULATION RESISTANCE: 100 MEGOHMS MIN.
6. LNSERTION FORCE : 5N~20N
7. UNMATING FORCE: 8N~20N
8. DURABILITY: 10,000 CYCLES
9. WATER PROOFNESS: THIS PRODUCT IS BASED ON IPX7.



5	SHELL	STAINLESS STEEL	NI Plated	1PCS
4	SHIELDING PLATE	STAINLESS STEEL	NI Plated	1PCS
3	CONTACT	COPPER ALLOY	TIN/Au/NI Plated	1SET
2	SHELL HOUSING	HIGH TEMPERATURE PLASTIC	BLACK	1PCS
1	HOUSING	HIGH TEMPERATURE PLASTIC	BLACK	1PCS
N.O.	DESCRIPTION	MATERIAL	REMARKS	QTY

A5	CC1	B12	GND
A9	VBUS	B9	VBUS
A12	GND	B5	CC2
PIN	SIGNAL NAME	PIN	SIGNAL NAME

凱帛企業有限公司 KABOE ENTERPRISE CO.,LTD.			
Name			
USB C母 SMT R/A TYPE 6PIN 黑膠 兩腳插板 防水 LCP 不帶硅膠			
Drawing No.			
USB-C-1040-0693N			
D-R	-HK-	APPD	
General Tolerances :		Unit :	Scale :
X. ±0.25	X. ±5.°	mm	ROM
.X ±0.20	.X ±2.°		
.XX ±0.15	.XX ±1.°		
.XXX ±0.10	.XXX ±0.5°		