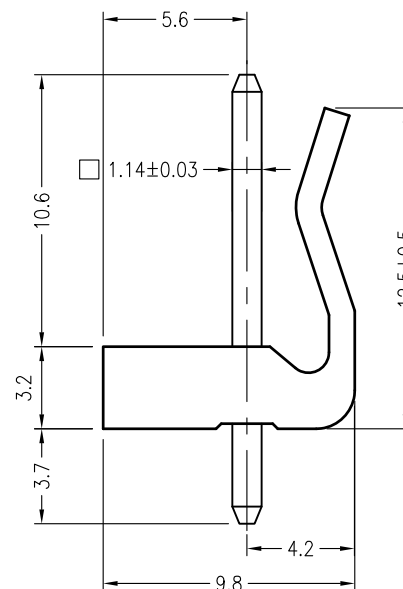
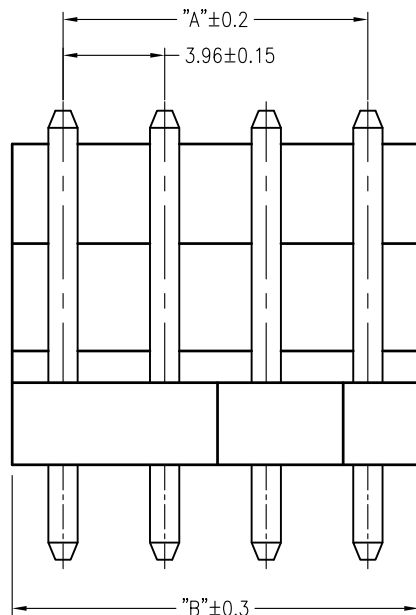


Poles	DIM.A	DIM.B
2P	3.96	7.92
3P	7.92	11.88
4P	11.88	15.84
5P	15.84	19.80
6P	19.80	23.76
7P	23.76	27.72
8P	27.72	31.68
9P	31.68	35.64
10P	35.64	39.60
11P	39.60	43.56
12P	43.56	47.52
13P	47.52	51.48
14P	51.48	55.44
15P	55.44	59.40
16P	59.40	63.36

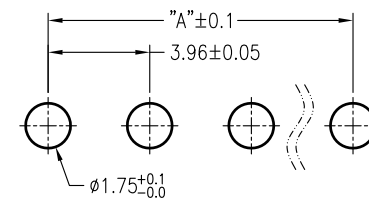


#### ■ 技术参数 SPECIFICATIONS

- ◆ 适用线规: AWG#18~#24  
Applicable Wire: AWG#18~#24
- ◆ 额定电压: 250V DC/AC(rms)  
Rated voltage: 250V DC/AC(rms)
- ◆ 额定电流: 5A  
Rated Current: 5A
- ◆ 耐压值: 1500V AC/minute  
Withstand voltage: 1500V AC/min.
- ◆ 工作温度: -40°C ~ +105°C  
Working Temp : -40°C ~ +105°C
- ◆ 绝缘电阻: ≥1000 MΩ  
Insulation resistance: ≥1000 MΩ
- ◆ 接触电阻: ≤20 mΩ  
Contact resistance: ≤20 mΩ

#### ■ 材料 MATERIAL

- ◆ 绝缘体: 尼龙66, UL94-V2  
Insulator: PA66, UL94-V2
- ◆ 接触针: 黄铜  
Contact PIN: Brass



P.C.B LAYOUT

凱昂企業有限公司 KABO ENTERPRISE LTD.		
Name		
Pitch3.96mm WAFER DIP V/T		
Drawing No.		
WAFER-3.96-2020-XX01N		
DR	CHK	APPD
General Tolerances :	Unit :	Scale :
.XX ±0.40 .X ±0.30 .X ±0.25 .XX ±0.15	mm	ROM