

### Specifications:

#### Electrical

Rated Voltage: 100V AC, DC

Rated Current: 1A

Withstand Voltage: 250V AC/minute

Contact Resistance: 20mΩ (MAX.)

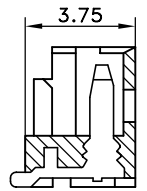
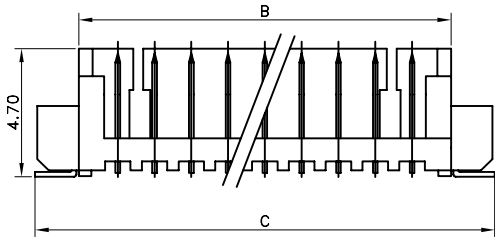
Insulation Resistance: 100MΩ (MIN.)

Temperature Range: -25°~+85°C

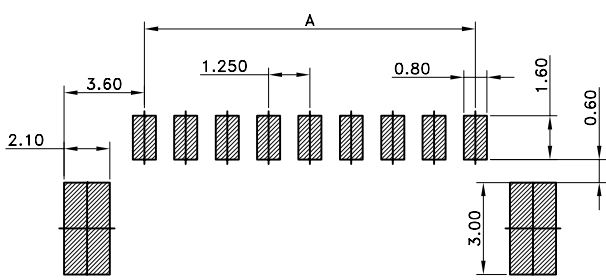
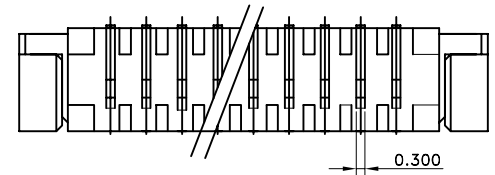
Material and Finish:

Circuits: 02~20

Material: NYLON46 UL94V-0



### Dimensional & Ordering Information:



RECOMMENDED P.C.BOARD HOLE DIMM.

Cir-cuits	Part No	Dimension mm		
		A	B	C
02	Wafer-1.25-1005-0203N	1.25	4.25	7.55
03	Wafer-1.25-1005-0303N	2.50	5.50	8.80
04	Wafer-1.25-1005-0403N	3.75	6.75	10.05
05	Wafer-1.25-1005-0503N	5.00	8.00	11.30
06	Wafer-1.25-1005-0603N	6.25	9.25	12.55
07	Wafer-1.25-1005-0703N	7.50	10.50	13.80
08	Wafer-1.25-1005-0803N	8.75	11.75	15.05
09	Wafer-1.25-1005-0903N	10.00	13.00	16.30
10	Wafer-1.25-1005-1003N	11.25	14.25	17.55
11	Wafer-1.25-1005-1103N	12.50	15.50	18.80
12	Wafer-1.25-1005-1203N	13.75	16.75	20.05
13	Wafer-1.25-1005-1303N	15.00	18.00	21.30
14	Wafer-1.25-1005-1403N	16.25	19.25	22.55
15	Wafer-1.25-1005-1503N	17.50	20.50	23.80
16	Wafer-1.25-1005-1603N	18.75	21.75	25.05
17	Wafer-1.25-1005-1703N	20.00	23.00	26.30
18	Wafer-1.25-1005-1803N	21.25	24.25	27.55
19	Wafer-1.25-1005-1903N	22.50	25.50	28.80
20	Wafer-1.25-1005-2003N	23.75	26.75	30.05

凱帛企業有限公司  
KABO ENTERPRISE CO., LTD.

DESCRIPTION(內容):  
Pitch1.25mm WIRE TO BOARD  
SMT V/T TYPE

PART NO:  
(料號) Wafer-1.25-1005-xx03N

DWG NO(圖號):

DRAWN(製圖):

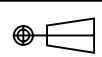
CHECKED(確認):

APPROVAL(核准):

GENERAL TOLERANCE:  
(公差)

.X ±0.30  
.XX ±0.20  
.XXX±0.10

SCALE(比例):  
1:XX



REV:  
A

UNIT:  
mm

SIZE:  
A4

SHEET:  
1/1

REV

1

2

3

4

DESCRIPTION

DATE

2006.07.03