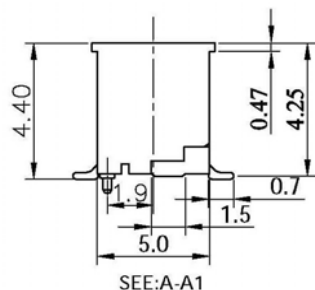
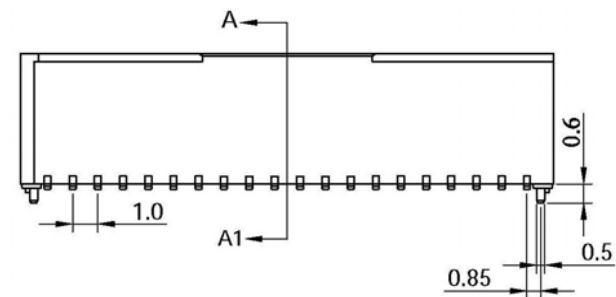


RECOMMENDED P.C. BOARD PATTERN DIM.



SEE:A-A1

## Specifications

### Electrical

Voltage Rating: 50VAC DC

Current Rating: 1.0A AC DC (AWG 28)

Contact Resistance: Initial value/20mΩmax

After environmental testing/40mΩmax

Insulation Resistance: 100MΩmin

Temperature Range: -25°C~+85°C

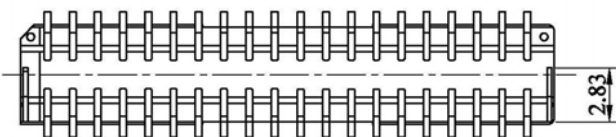
Withstanding voltage:500V AC/minute

### Material and Finish

Header contact:Phosphor bronze,nickel-undercoated,  
tin-plated or gold-plated

Water:Glass-filled polyamide,UL94V-0,natural(ivory)

Solder tad:Brass,copper-undercoated,tin/lead-plated



Circuits	Dimension mm (in.)	
	A	B
2*10	9.0(.354)	12.3(.484)
2*15	14.0(.551)	17.3(.681)
2*20	19.0(.748)	22.3(.878)
2*25	24.0(.945)	27.3(1.075)

凱鼎企業有限公司 KABO ENTERPRISE LTD.		
Name		
Pitch1.0mm WAFER SMT V/T TYPE		
Drawing No.		
Wafer-1.0-1006-xx03N		
DR	CHK	APPD
General Tolerances :	Unit :	Scale :
x.xx±0.25 x.x±0.30	mm	ROM