

RECOMMENDED P.C.BOARD HOLE DIMM.

SPECIFICATIONS

Current Rating : 3A AC, DC

Voltage Rating : 250V AC Maximum

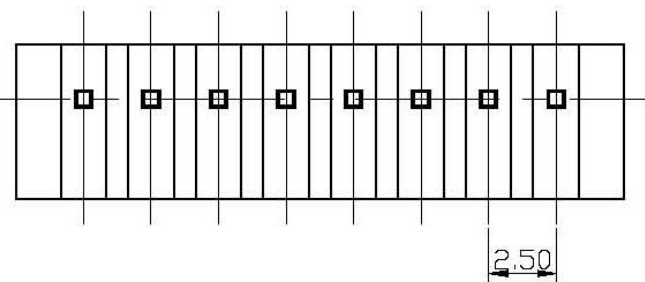
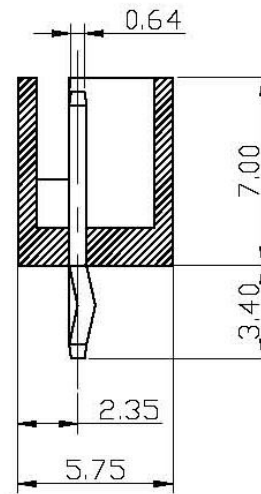
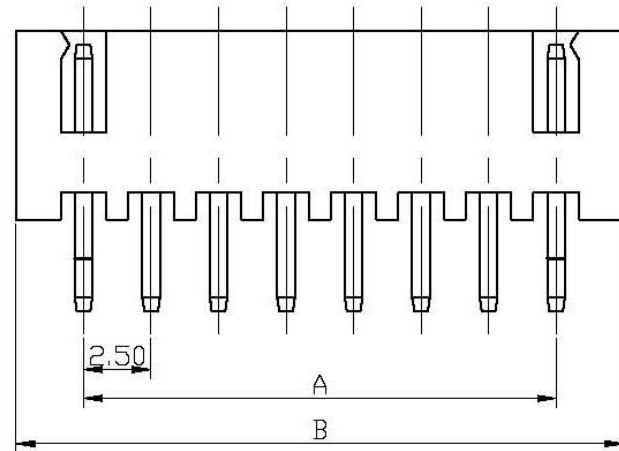
Operating Temp : $-25^{\circ}\text{C} \sim +85^{\circ}\text{C}$

Contact Resistance : $10\text{M}\Omega$ Max.

Insulation Resistance : $1000\text{M}\Omega$ Min.

Terminal Material : Brass / Tin – plated

Material : Nylon 66, UL94V – 0



Poles	Dimension mm (in.)	
	A	B
2	2.50 (0.098)	7.50 (0.295)
3	5.00 (0.197)	10.00 (0.394)
4	7.50 (0.295)	12.50 (0.492)
5	10.00 (0.394)	15.00 (0.591)
6	12.50 (0.492)	17.50 (0.689)
7	15.00 (0.591)	20.00 (0.787)
8	17.50 (0.689)	22.50 (0.886)
9	20.00 (0.787)	25.00 (0.984)
10	22.50 (0.886)	27.50 (1.802)
11	25.00 (0.984)	30.00 (1.181)
12	27.50 (1.802)	32.50 (1.280)
13	30.00 (1.181)	35.00 (1.378)
14	32.50 (1.280)	37.50 (1.476)
15	35.00 (1.378)	40.00 (1.575)
16	37.50 (1.476)	42.50 (1.673)
17	40.00 (1.575)	45.00 (1.772)
18	42.50 (1.673)	47.50 (1.870)
19	45.00 (1.772)	50.00 (1.969)
20	47.50 (1.870)	52.50 (2.067)

凱帛企業有限公司 KABO ENTERPRISE LTD.		
Name		
Pitch2.5mm Wafer DIP V/T Type		
Drawing No.		
Wafer-2.5-2001-xx01		
DR	CHK	APPD
General Tolerances :	Unit :	Scale :
x.xx±0.1 x.x±0.5	mm	ROM